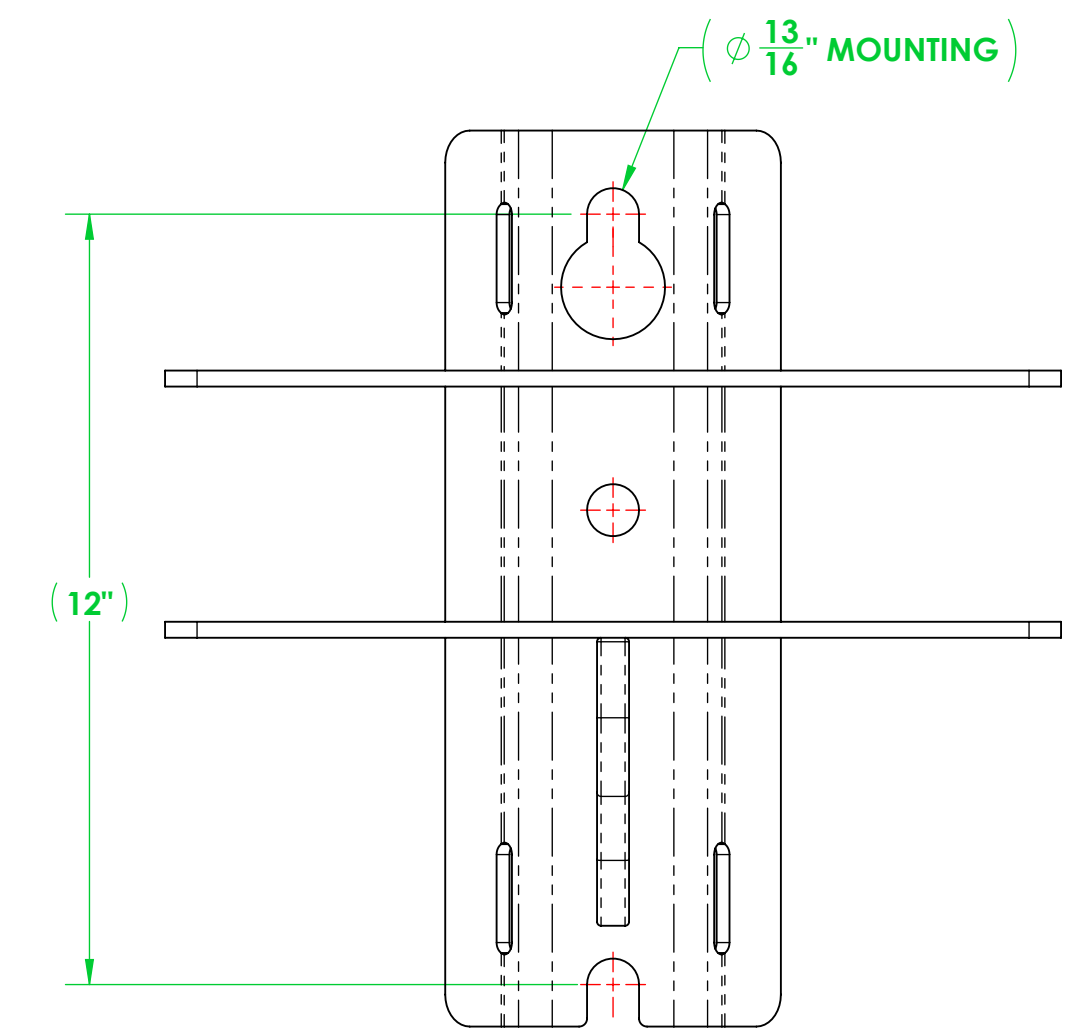
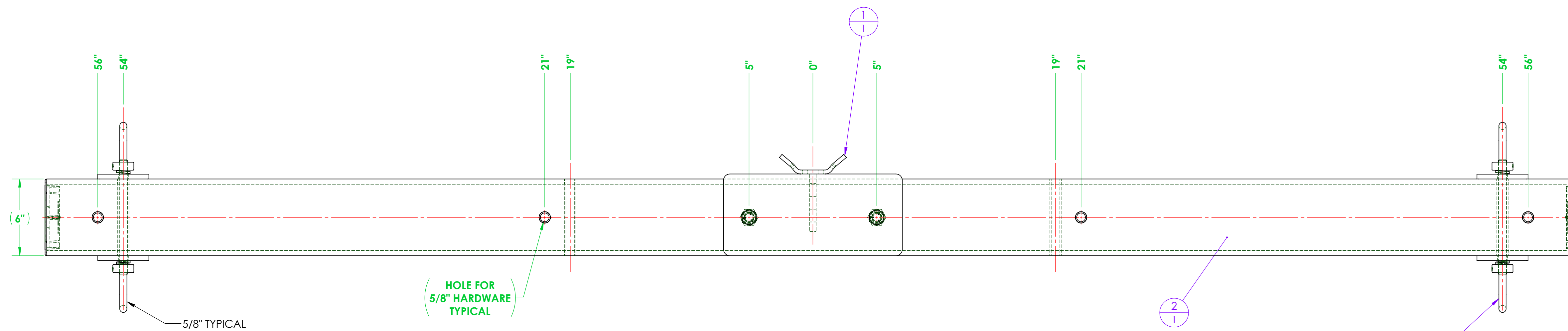
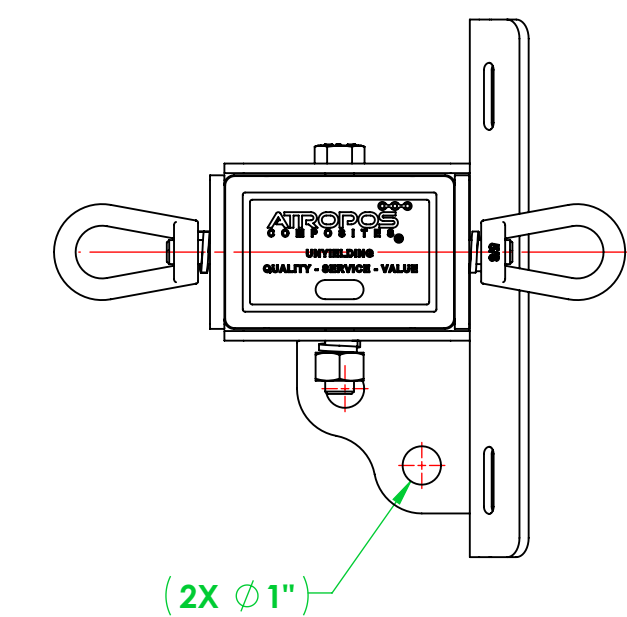
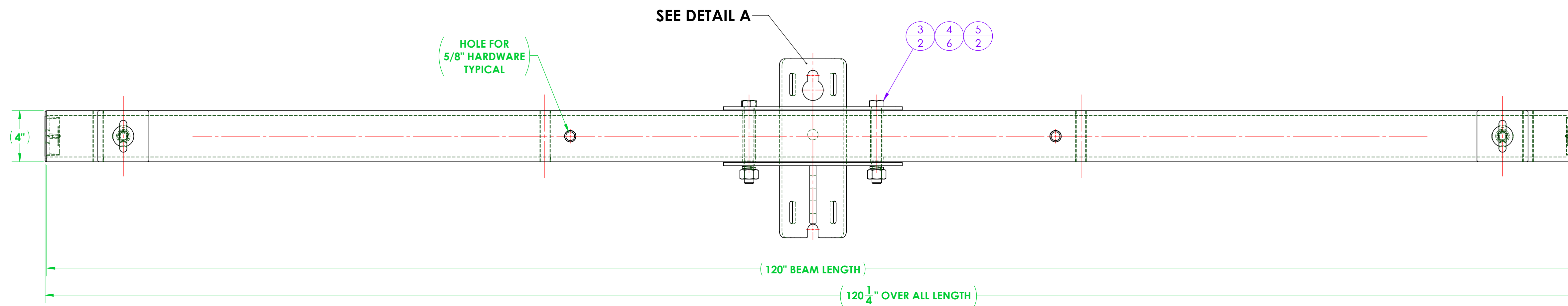
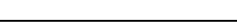


| REVISIONS | | | |
|-----------|-------------|------|----------|
| REV. | DESCRIPTION | DATE | APPROVED |
| - | | - | |



DETAIL A



| ITEM NO. | PART NUMBER | DESCRIPTION | QTY. | GENERAL NOTES | UNLESS OTHERWISE SPECIFIED | | NAME | DATE | <div> ATROPIS COMPOSITES 12208 MISSOURI BOTTOM ROAD, HAZELWOOD, MO 63042 PHONE: 314.714.6001 FAX: 314.895.1943 SALES@LATRINTH-TECH.COM</div> <div>TITLE: ASSEMBLY, DEADEND, 4603, (2) WIRE, 10 FT.</div> <div>SIZE [DWG. NO.] D 4603A120-D312-2914</div> <div>REV -</div> <div>SCALE: 1:8 WEIGHT: 122.73 SHEET 1 OF 4</div> |
|----------|-----------------------|--|------|---------------|---|-----------|-----------|------------|--|
| 1 | A713-0002 | WELDMENT, 3/4" HARDWARE MOUNTING BRACKET - DEADEND 4600 SERIES | 1 | | DIMENSIONS ARE IN INCHES STANDARD TOLERANCES FRACTIONAL: ±.02 ANGULAR: MACHINED: ±0.5° BEND: ±2° TWO PLACE DECIMAL: ±0.03 THREE PLACE DECIMAL: ±0.005 INTERPRET GEOMETRIC TOLERANCING PER ANSI Y14.5 | CHECKED | F. BRYANT | 10/16/2025 | |
| 2 | 4603A120-D312-2914 CA | ASSEMBLY, DEADEND, 4603, (2) WIRE, 10 FT. | 1 | | | DRAWN | | | |
| 3 | A616-0020-02 | BOLT, HEX, 3/4"-10 X 6.00" LONG, HOT DIPPED GALVANIZED STEEL, 1-1/8" DRIVE | 2 | | | ENG APPR. | | | |
| 4 | A616-0042-02 | LOCK WASHER, FOR 5/8" SCREW, 0.641" ID, 1.073" OD, 0.156" THICK, HOT-DIPPED GALVANIZED STEEL | 6 | | | MFG APPR. | | | |
| 5 | A616-0019-02 | EXTREME STRENGTH NUT, HEX, 3/4"-10, 2H, HOT-DIPPED GALVANIZED | 2 | | | Q.A. | | | |
| 6 | A711-0011 | WASHER, SQUARE, 4.00" X 4.00" X 0.375 THICK | 4 | | | | | | |
| 7 | A616-0017-02 | EYENUT, 5/8"-11, GALVANIZED STEEL | 4 | | | | | | |
| 8 | A711-0016 | ALL-THREAD, 5/8"-11 X 9.00" LONG, GALV. STEEL | 2 | | | | | | |
| | | | | | | | | | |